



UNIVERSITY OF EDUCATION, WINNEBA
INSTITUTE FOR TEACHER EDUCATION AND
CONTINUING PROFESSIONAL DEVELOPMENT
(ITECPD)



END-OF-SECOND-SEMESTER EXAMINATION (August 2021)

COURSE CODE: EGS 123

COURSE TITLE: INTRODUCTION TO INTEGRATED SCIENCE II

TIME ALLOWED: 50 MINUTES

STUDENT'S INDEX NUMBER:

--	--	--	--	--

NAME OF COLLEGE:

--

GENERAL INSTRUCTIONS:

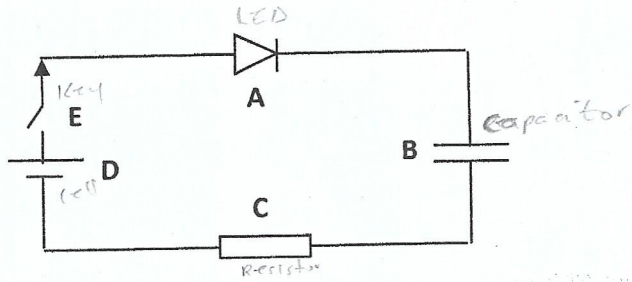
- This paper is made up of ONE SECTION.
- Section ONE is made up of four essay type questions.
- Answer TWO questions in your answer booklet.
- Each question carries equal marks. You are expected to start each question from a new page.
- You are expected to handover your answer booklet to the invigilator before you leave the examination hall.

SECTION TWO

1. a) The kinetic energy of a moving tricycle is 5kJ. If the mass of the tricycle is 10kg, calculate its velocity. [3 marks]
b) Explain the following terms and give one example of each:
i. Non-renewable energy sources [2 marks]
ii. Renewable energy resources [2 marks]
c) Outline three contributions of science and technology to food and nutrition. [3 marks]
2. Two resistors of resistances 3Ω and 4Ω are connected in a circuit containing a 2v battery. Calculate the current in the circuit when the resistors are connected in:
a) Series [3 marks]
b) Parallel [3 marks]
c) Malaria is a common parasitic disease in Ghana. Provide the following information as related to the disease:
i. Causative organism
ii. Vector
iii. Two ways of preventing malaria. [4 marks]

*Banku Mages
 1. 1000-1100
 2. 1100-1200
 3. 1200-1300
 4. 1300-1400
 5. 1400-1500*

3. a) Identify the electronic components A,B,C,D and E in the circuit diagram below and give the function of each.



[5 marks]

b) Outline three contributions of science and technology to health. [3 marks]

c) In what two ways can information on the environment be disseminated to the public? [2 marks]

4. a) Define Health according to World Health Organization. [2 marks]

b) First aid administration is a practice which is recommended in schools. Outline four reasons for administering first aid. [4 marks]

c) Explain the following and give one example for each:

i. Primary industry - *extraction of raw materials from natural resources* [4 marks]

ii. Secondary industry - *processing of raw materials into finished goods* [4 marks]